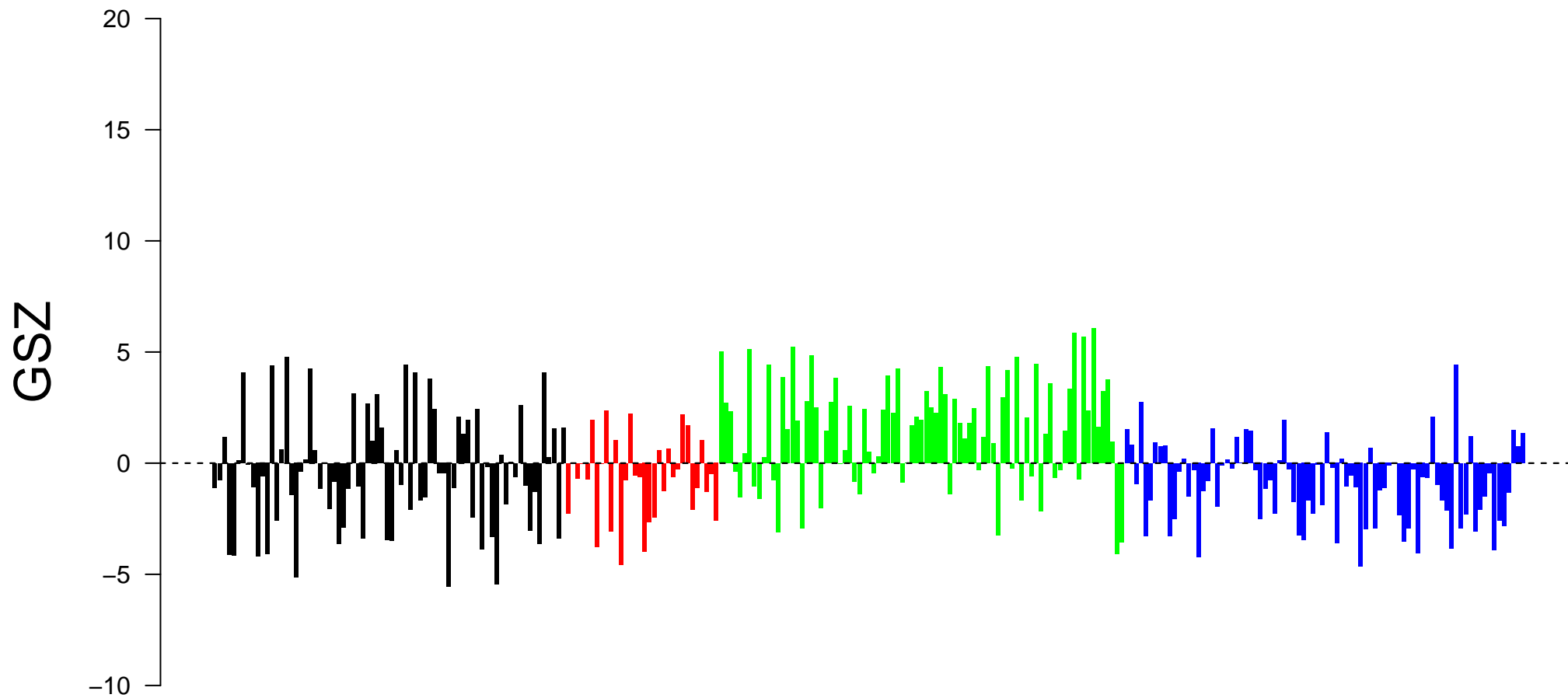
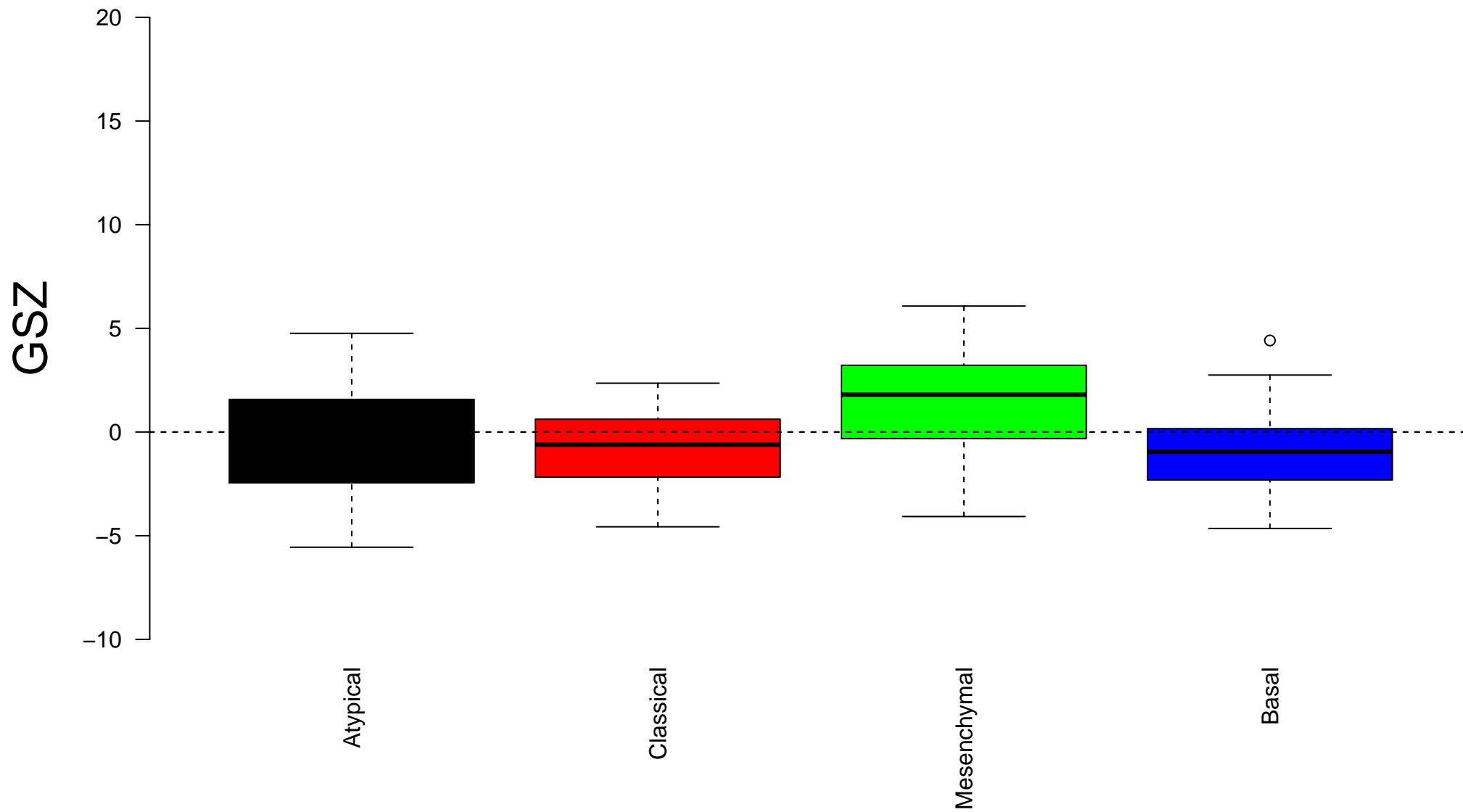


# dermatan sulfate biosynthetic process



# dermatan sulfate biosynthetic process



# Enrichment in spots: dermatan sulfate biosynthetic process



# Expression of dermatan sulfate biosynthetic process in Spot A

$\Delta e$

1.0

0.5

0.0

-0.5

-1.0



# Expression of dermatan sulfate biosynthetic process in Spot B

$\Delta e$

1.0

0.5

0.0

-0.5

-1.0



# Expression of dermatan sulfate biosynthetic process in Spot C

$\Delta e$

1.0

0.5

0.0

-0.5

-1.0



# Expression of dermatan sulfate biosynthetic process in Spot D

$\Delta e$

1.0

0.5

0.0

-0.5

-1.0



# Expression of dermatan sulfate biosynthetic process in Spot E

$\Delta e$

1.0

0.5

0.0

-0.5

-1.0





# Expression of dermatan sulfate biosynthetic process in Spot F

$\Delta e$

1.0

0.5

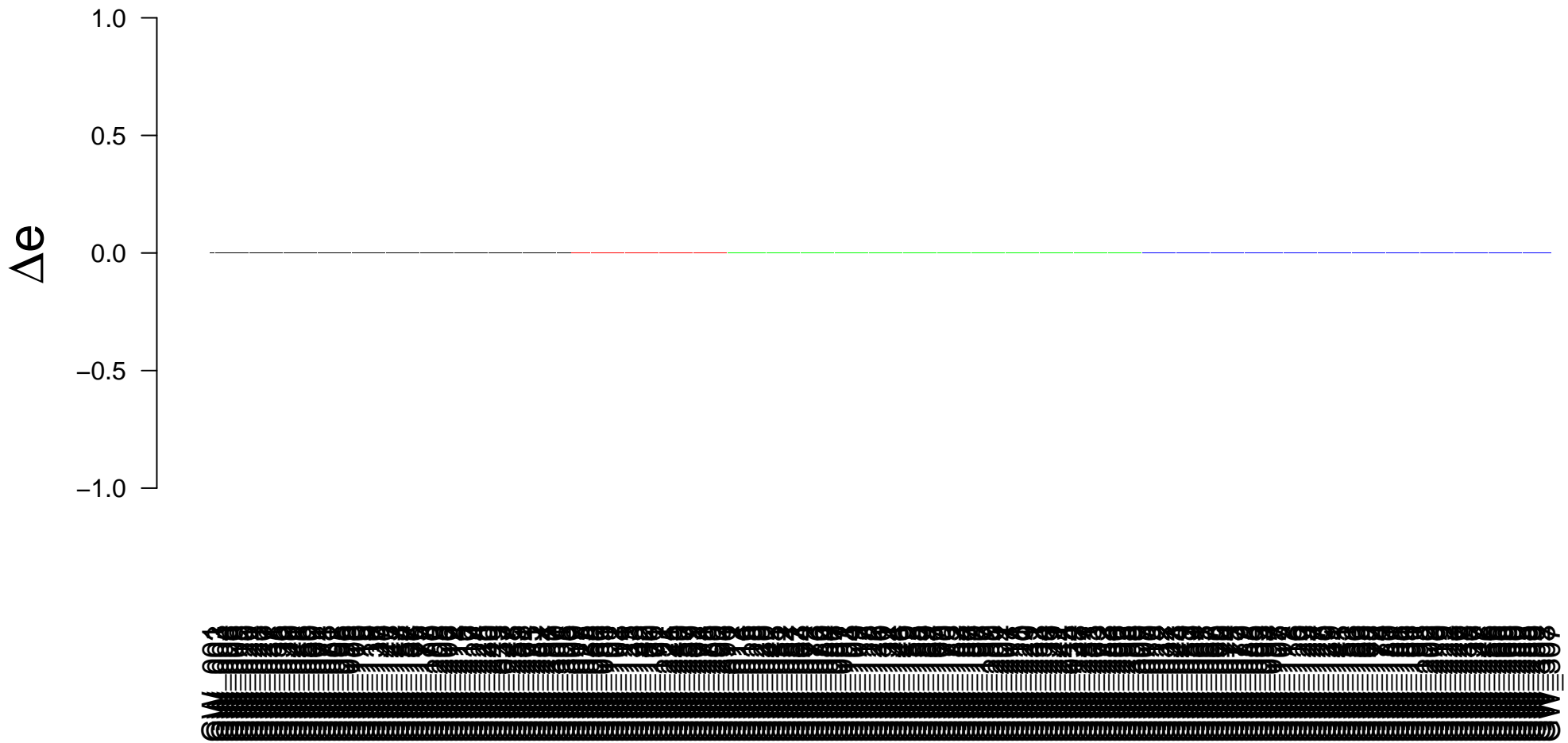
0.0

-0.5

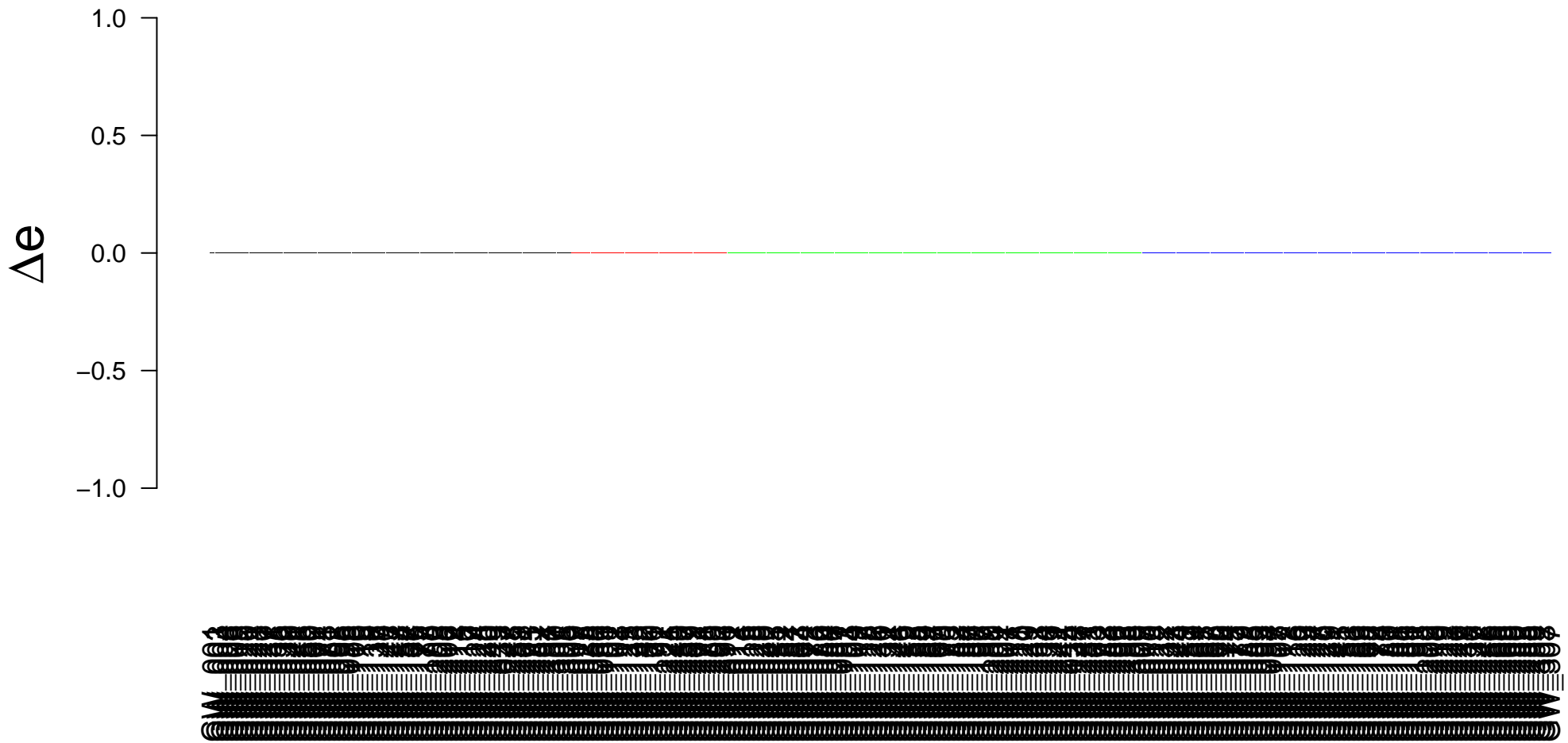
-1.0



# Expression of dermatan sulfate biosynthetic process in Spot G



# Expression of dermatan sulfate biosynthetic process in Spot H



# Expression of dermatan sulfate biosynthetic process in Spot I

$\Delta e$

1.0

0.5

0.0

-0.5

-1.0



# Expression of dermatan sulfate biosynthetic process in Spot J

$\Delta e$

1.0

0.5

0.0

-0.5

-1.0



# Expression of dermatan sulfate biosynthetic process in Spot K

$\Delta e$

1.0

0.5

0.0

-0.5

-1.0



# Expression of dermatan sulfate biosynthetic process in Spot L

$\Delta e$

1.0  
0.5  
0.0  
-0.5  
-1.0



# Expression of dermatan sulfate biosynthetic process in Spot M

$\Delta e$

1.0

0.5

0.0

-0.5

-1.0





# Expression of dermatan sulfate biosynthetic process in Spot N

$\Delta e$

1.0

0.5

0.0

-0.5

-1.0



# Expression of dermatan sulfate biosynthetic process in Spot O

$\Delta e$

1.0

0.5

0.0

-0.5

-1.0



# Expression of dermatan sulfate biosynthetic process in Spot P

$\Delta e$

1.0

0.5

0.0

-0.5

-1.0



# Expression of dermatan sulfate biosynthetic process in Spot Q

$\Delta e$

1.0

0.5

0.0

-0.5

-1.0



# Expression of dermatan sulfate biosynthetic process in Spot R

$\Delta e$

1.0

0.5

0.0

-0.5

-1.0

